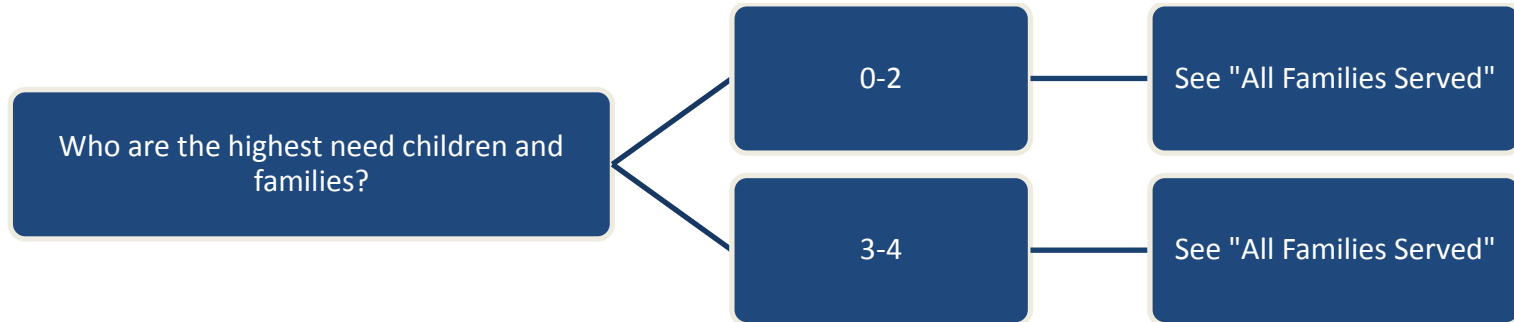


DISCOVERY PROCESS MODEL

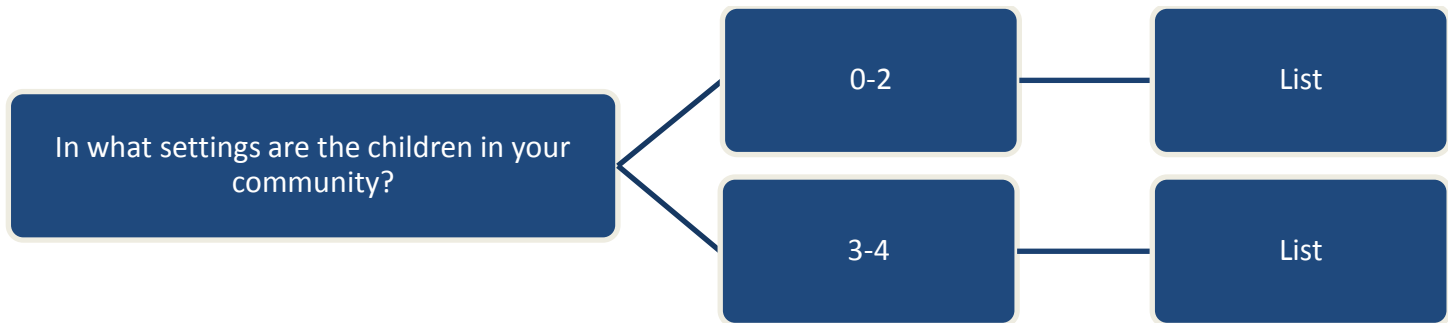
A.) DISCOVER NEEDS: WHO ARE THE PRIORITY CHILDREN AND FAMILIES IN YOUR INNOVATION ZONE?



All Families Served categories *	Number in community: 0-2	Number in community: 3-4
Children of teen parents		
Children in homeless families		
Children in families in poverty or deep poverty		
Children/families with DCFS involvement		
Children with disabilities, including		
Those transitioning from Early Intervention (birth to three) to preschool or Early Childhood Special Education (three to five)		
Children with disabilities not currently served		
Children in family, friend & neighbor (license-exempt) child care		
Linguistically isolated families and other families that experience significant barriers based on language		
Children of migrant or seasonal workers		
Other groups (locally defined) that meet the criteria in the Hard to Reach report.		

* Categories as defined in the, "Recommendation to the Early Learning Council regarding 'Highest Need Families'" report, June 2013.

B.) DISCOVER NEEDS: WHERE ARE THE CHILDREN BEING SERVED IN YOUR INNOVATION ZONE?



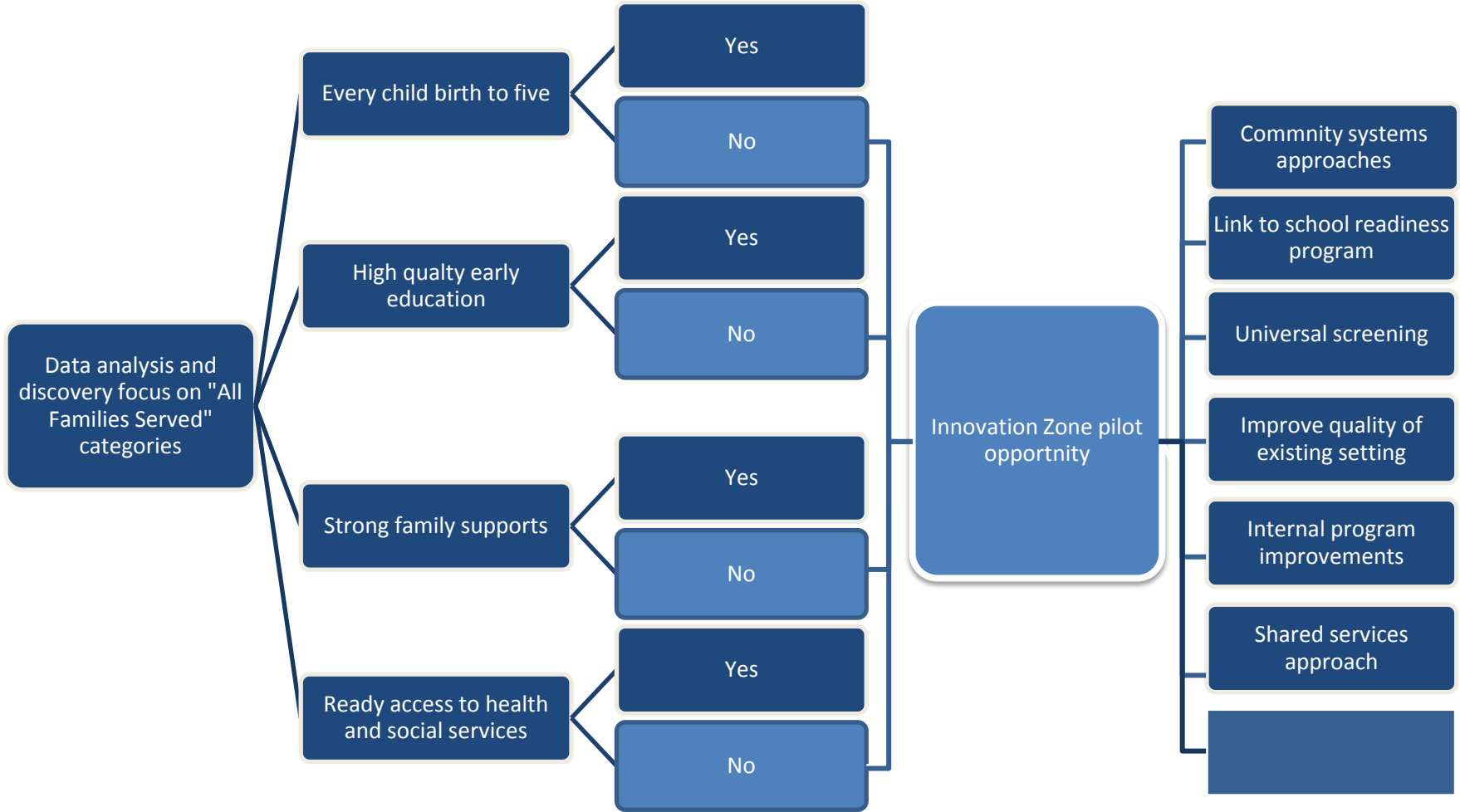
Early learning settings	Number served: 0-2	Number served: 3-4
Child care centers		
Part-day classroom-based program (center or school)		
Licensed child care homes		
Family, friend, and neighbor care		
At home		
Other		
Unknown		

C.) DISCOVER NEEDS: IN WHAT SETTINGS ARE THE PRIORITY CHILDREN?

Combine early learning settings data with All Families Served report. Add settings under each category.

All Families Served categories + settings	Number served in community: 0-2	Number served in community: 3-4
Children of teen parents		
<ul style="list-style-type: none"> • Child care centers 		
<ul style="list-style-type: none"> • Part-day classroom-based program (center or school) 		
<ul style="list-style-type: none"> • Licensed child care homes 		
<ul style="list-style-type: none"> • Family, friend, and neighbor care 		
<ul style="list-style-type: none"> • At home 		
<ul style="list-style-type: none"> • Other 		
<ul style="list-style-type: none"> • Unknown 		
<ul style="list-style-type: none"> • Children in family, friend & neighbor (license-exempt) child care 		
Children in homeless families		
Children in families in poverty or deep poverty		
Children/families with DCFS involvement		
Children with disabilities, including		
Those transitioning from Early Intervention (birth to three) to preschool or Early Childhood Special Education (three to five)		
Children with disabilities not currently served		
Children in family, friend & neighbor (license-exempt) child care		
Linguistically isolated families and other families that experience significant barriers based on language		
Children of migrant or seasonal workers		
Other groups (locally defined) that meet the criteria in the Hard to Reach report.		

D.) DISCOVER NEEDS: WHERE ARE THE INNOVATION ZONE OPPORTUNITIES?



Appendix: “Data Notes” from IECAM, “Recommendation to the Early Learning Council regarding ‘Highest Need Families’”

Following are sources of population data for each of the priority groups, identified by IECAM.

Children of Teen Parents

1. Teen Parents

- Data source: IPUMS
- Data types: number of female teens who are mothers / number of teens who are parents
- Calculation: percent of female teens who are mothers / percent of teens who are parents
- Region: PUMA
- IECAM: has these data in process for its Needs Assessment 2 project for 2009 – 2011
- These data represent a universe of children

2. Births to teens

- Data source: IDPH
- Data types: births to mothers age 19 and under (also to mothers under age 15, ages 15, 16, and 17; ages 18 and 19); percent of births that are births to mothers age 19 and under
- Region: county
- IECAM has these data from IDPH for 2008 and 2009 (the latest year available)
- These data represent a universe of children

Children in Homeless Families

1. Homeless students

- Data source: ISBE EC
- Data type: number of students who are homeless in PFA, K, Grades 1-3
- Region: county (but probably could be obtained for other regions in the future)
- IECAM has these data as part of its Needs Assessment 2 project for 2011 and 2012
- These data are program data

2. Homeless persons

Note: HUD prepares an annual report to Congress on homelessness. The latest report for 2009: <https://www.onecpd.info/resources/documents/5thHomelessAssessmentReport.pdf> indicates (in Appendix C-2) the number of homeless persons in IL (14,055) but not the number of children.

3. Homeless students

- National Center on Family Homelessness
<http://www.familyhomelessness.org/>
- Homelessness Resource Center
<http://homeless.samhsa.gov/>
- National Center for Homeless Education
<http://center.serve.org/nche/>

4. Federal data on homeless populations

Data from McKinney-Vento are available on Dept. of Ed data pages. These are available by state; not by smaller regions. For example:

Latest school year available: 2010-2011

Number of homeless students enrolled, with or without M-V subgrants, by primary nighttime residence:

Doubled up (e.g., living with another family): 32,159

Children in Poverty or Deep Poverty

1. Children in families living in poverty

- Data source: U.S. Census (& IECAM estimates)
- Data type: Number of children age 0 through 5, and individual age cohorts 0 through 5, living in families below 100% FPL
- Region: state, county, township, municipality, state house and senate legislative districts, federal congressional districts, elementary and unit school districts
- IECAM: data for 2005 through 2010 (latest census data); 2011 for some large areas
- NOTE: Some regions are not available at all years

2. Children in families living in deep poverty

NOTE: Same as above, except use 50% FPL instead of 100% FPL

NOTE: Census uses 50% FPL for "extreme poverty"

Children/Families with DCFS Involvement

1. Child Abuse and Neglect

- Data source: DCFS
- Data types: (1) Abuse and Neglect Reports; (2) number of indicated investigations; (3) number of children reported as sexually abused; (4) number of children indicated for sexual abuse.
- Region: County
- IECAM: data available for 2009 through 2011 in Needs Assessment 2 project; and available on DCFS web site
- (The committee will also ask DCFS if it can provide data on the # of children birth to three who it has screened, and data on intact families receiving DCFS services through contracted agencies)

2. Foster children

- Data source: DCFS
- Data type: number of children birth until age 21 in foster care
- Region: county
- IECAM: data in Needs Assessment 2 project for 2009 - 2012

Children with disabilities

1. Early Intervention

- Data source: IDHS
- Data type: number of children with an IFSP
- Region: county
- IECAM: has these data from IDHS for 2007 – 2012
- These data are program data

2. Children with an IEP in PFA, K, grades 1-3

- Data source: ISBE
- Data type: number of children
- Region: county (but could probably get other regions in the future)
- IECAM: has these data in process for its Needs Assessment project for 2011-2012
- These data are program data

3. Children with a vision or hearing disability

- Data source: IPUMS
- Data type: Children with a vision disability (blind or serious difficulty seeing even with glasses)
- Data type: children with a hearing disability (deaf or serious difficulty hearing)
- Region: PUMA
- IECAM: has these data as part of its Needs Assessment 1 project for 2009; data for subsequent years not obtained (but it's possible to obtain them)
- These data partly represent a universe of children (i.e., they're based on survey responses rather than program participation, although some program participation may be involved)

Children in Family, Friend & Neighbor (license-exempt) Child Care

- Data Source: IDHS / INCCRRA
- Data type: Children receiving CCAP in license-exempt family child care homes
- Region: County, township, municipality, etc.
- IECAM: these data are included in the IECAM searchable database for 2008 through 2012
- NOTE: The CCAP data assume low-income families.
- NOTE: The category "license-exempt family child care homes" as reported on IECAM includes the following IDHS categories: [a] Day Care Home Exempt From Licensing; [b] Relative (Exempt From Licensing). Care provided in the home of a relative; [c] Non-Relative (Exempt From Licensing). Care provided in the home of the child; [d] Relative (Exempt From Licensing). Care provided in the home of the child)
- NOTE: The data as reported on IECAM do not separate relative care from other types of license-exempt family child care
- NOTE: The source INCCRRA data may be able to separate out relative care.
- NOTE: IDHS's privacy restrictions preclude the reporting of data when 10 or fewer CCAP children are present in an area (e.g., a particular township). This includes a few counties and almost all townships and municipalities. With this restriction, the data may not be very useful without another data agreement with IDHS that allows such reporting.

Linguistically Isolated Families

1. Linguistically isolated households

- Data source: U.S. Census bureau
- Data type: number of households that are linguistically isolated speaking Spanish and “other non-English languages”
- Region: state, county, township, municipality, state house and senate legislative districts, Federal congressional districts, elementary and unit school districts
- IECAM: data for 2005 through 2010 (latest census data); 2011 for some large areas
- NOTE: Some regions are not available at all years
- NOTE: Data are for households rather than children or adults
- NOTE: Data are available for only one individual language, Spanish; all other languages are grouped into “other”

2. Other demographic data on families experiencing barriers based on language (to be developed)

3. Children age 5 through 17 living in LIHs

- Data source: U.S. Census bureau
- Data type: as noted
- Region: county, townships, municipalities (others possible)
- IECAM: Included data for 2009 in Needs Assessment 1 project; these data could be obtained for later years
- NOTE: Target group is children age 5 through 17, rather than children under age 5

Children of Migrant or Seasonal Workers

1. Migrant and Seasonal Head Start

- Data source: Head Start collaboration office
- Data type: funded enrollment
- Region: county
- IECAM: data reported in IECAM public db 2006-2011
- NOTE: Data are only available by county; other regions do not really make sense to report.

2. Migrants

NOTE: We need to determine what we mean by migrant. Census means anyone who moves from one area to another, which is probably not what’s meant here. What we mean here is probably “migrant and seasonal farmworkers,” (MSFW), isn’t it?

NOTE: Census has data such as “geographic mobility by selected characteristics” that indicates number of people of Hispanic background who moved during the year. But this is not tied to occupation.

NOTE: There is some census data on workers who moved and were living abroad the previous year. All these data are for adults, not children.

3. ISBE

Some data may be available in ISBE’s Migrant Education Program. We haven’t seen these data, so we don’t know exactly what they consist of.